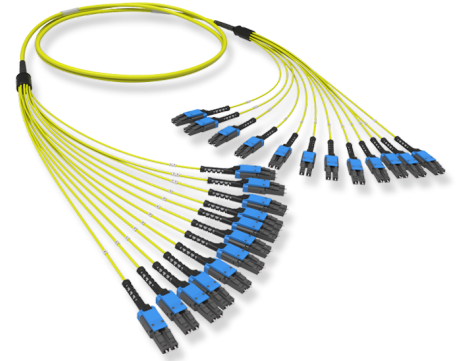


Breakout cable assembly LC-UPC/LC-UPC Duplex Uniboot, 24F SM9/125 OS2

FO Breakout Assembly 24 x 09/125 OS2, LC-UPC/LC-UPC Duplex Uniboot, Push-Pull-Boot, type S, FRNC, ULL



SPECIFICATION

Fiber quantity	24 fibers
Cable design	Round dielectric cable
Cable Outer Diameter, mm	3,8 mm
Outer Jacket Material	FRNC
Fiber type	SM 9/125 OS2
Connector, Side A	LC-UPC Duplex, Push-Pull-Boot
Connector, Side B	LC-UPC Duplex, Push-Pull-Boot
Polarity	Polarity change feature
Loss Category	SM, Ultra Low Loss

Part Numbers

90129016	FO Breakout Assembly 24 x 09/125 OS2, LC-UPC/LC-UPC Duplex Uniboot, Push-Pull-Boot, type S, FRNC, ULL, 10 m
90129017	FO Breakout Assembly 24 x 09/125 OS2, LC-UPC/LC-UPC Duplex Uniboot, Push-Pull-Boot, type S, FRNC, ULL, 15 m
90129018	FO Breakout Assembly 24 x 09/125 OS2, LC-UPC/LC-UPC Duplex Uniboot, Push-Pull-Boot, type S, FRNC, ULL, 20 m
90129019	FO Breakout Assembly 24 x 09/125 OS2, LC-UPC/LC-UPC Duplex Uniboot, Push-Pull-Boot, type S, FRNC, ULL, 25 m
90129020	FO Breakout Assembly 24 x 09/125 OS2, LC-UPC/LC-UPC Duplex Uniboot, Push-Pull-Boot, type S, FRNC, ULL, 30 m
90129021	FO Breakout Assembly 24 x 09/125 OS2, LC-UPC/LC-UPC Duplex Uniboot, Push-Pull-Boot, type S, FRNC, ULL, 35 m
90129022	FO Breakout Assembly 24 x 09/125 OS2, LC-UPC/LC-UPC Duplex Uniboot, Push-Pull-Boot, type S, FRNC, ULL, 40 m
90129023	FO Breakout Assembly 24 x 09/125 OS2, LC-UPC/LC-UPC Duplex Uniboot, Push-Pull-Boot, type S, FRNC, ULL, 45 m
90129024	FO Breakout Assembly 24 x 09/125 OS2, LC-UPC/LC-UPC Duplex Uniboot, Push-Pull-Boot, type S, FRNC, ULL, 50 m

Part Numbers (continue)

90129025	FO Breakout Assembly 24 x 09/125 OS2, LC-UPC/LC-UPC Duplex Uniboot, Push-Pull-Boot, type S, FRNC, ULL, 55 m
90129026	FO Breakout Assembly 24 x 09/125 OS2, LC-UPC/LC-UPC Duplex Uniboot, Push-Pull-Boot, type S, FRNC, ULL, 60 m
90129027	FO Breakout Assembly 24 x 09/125 OS2, LC-UPC/LC-UPC Duplex Uniboot, Push-Pull-Boot, type S, FRNC, ULL, 70 m
90129028	FO Breakout Assembly 24 x 09/125 OS2, LC-UPC/LC-UPC Duplex Uniboot, Push-Pull-Boot, type S, FRNC, ULL, 80 m
90129029	FO Breakout Assembly 24 x 09/125 OS2, LC-UPC/LC-UPC Duplex Uniboot, Push-Pull-Boot, type S, FRNC, ULL, 90 m
90129030	FO Breakout Assembly 24 x 09/125 OS2, LC-UPC/LC-UPC Duplex Uniboot, Push-Pull-Boot, type S, FRNC, ULL, 100 m