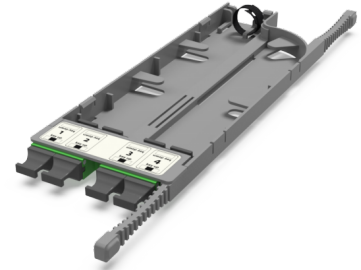


## CA6 - Adapter cassette SM

CA6 - Adapter cassette 4 x MTP adapters (green), SM, TIA type A (opposed key)



### SPECIFICATION

Fiber type	SM 9/125 OS2
Ports quantity	4 ports
Type of interface, front end	MTP adapter (Opposed key)
Material	Engineering Plastic
Product Series	CA6 - Adapter cassette Currant
Cassette/plate polarity	TIA type A
Configuration	Singlemode

### Part Numbers

30226005	CA6 - Adapter cassette 4 x MTP adapters (green), SM, TIA type A (opposed key)
----------	---